

985 Pacific Street | Vacant Land For Lease

Prospect Heights | 10,000 SF M1-1 Lot



TERRACRG
COMMERCIAL REALTY GROUP



ADDRESS

985 Pacific Street a/k/a
505 Grand Avenue
Brooklyn, NY 11238

HIGHLIGHTS

- Ideal for parking
- Corner property
- One block from Atlantic Ave.
- Up to 5-year lease term
- Full perimeter fencing
- Two access points

CORNER

Grand Avenue & Pacific Street

NEIGHBORHOOD

Prospect Heights

POSSESSION

January 2017

LEASEABLE AREA

10,000 SF

LOT SIZE

100.0 x 100.0

ZONING

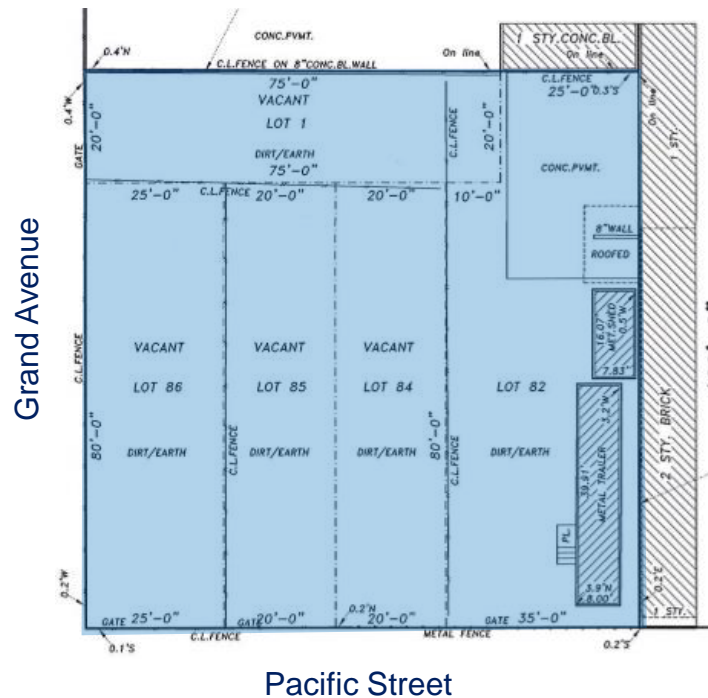
M1-1

TRANSPORTATION



PRICING & TERMS

Upon Request



For more information, contact exclusive agents:

Peter Schubert
Managing Director
pschubert@terracrg.com

Ronnie Shalam
Associate
rshalam@terracrg.com

(718) 768-7788

terracrg.com



TERRACRG
COMMERCIAL REALTY GROUP